

Quick set-up guide for the MAC-x01 family

This manual describes how to:

- Set your computer to work with MAC-201.
- Configure multiple MAC units.

Setting up your computer

⚠ Before we go any further please make sure you have an internet connection and Ethernet CAT-5E crossover cable (available from teldis).

The web interface allows you to fully configure the MAC-201 unit through an Ethernet connection and a web browser. Firstly you need to set up the IP address of *your computer*.

IP ADDRESS: 192.168.1.1

SUBNET MASK: 255.255.255.0

If you are not sure to configure the IP address on your computer, we suggest you use a free-to-use app - Net Profiles that allows you to change IP addresses via a set of profiles that you create. In few clicks it lets you save your current IP address and then change to a new one.

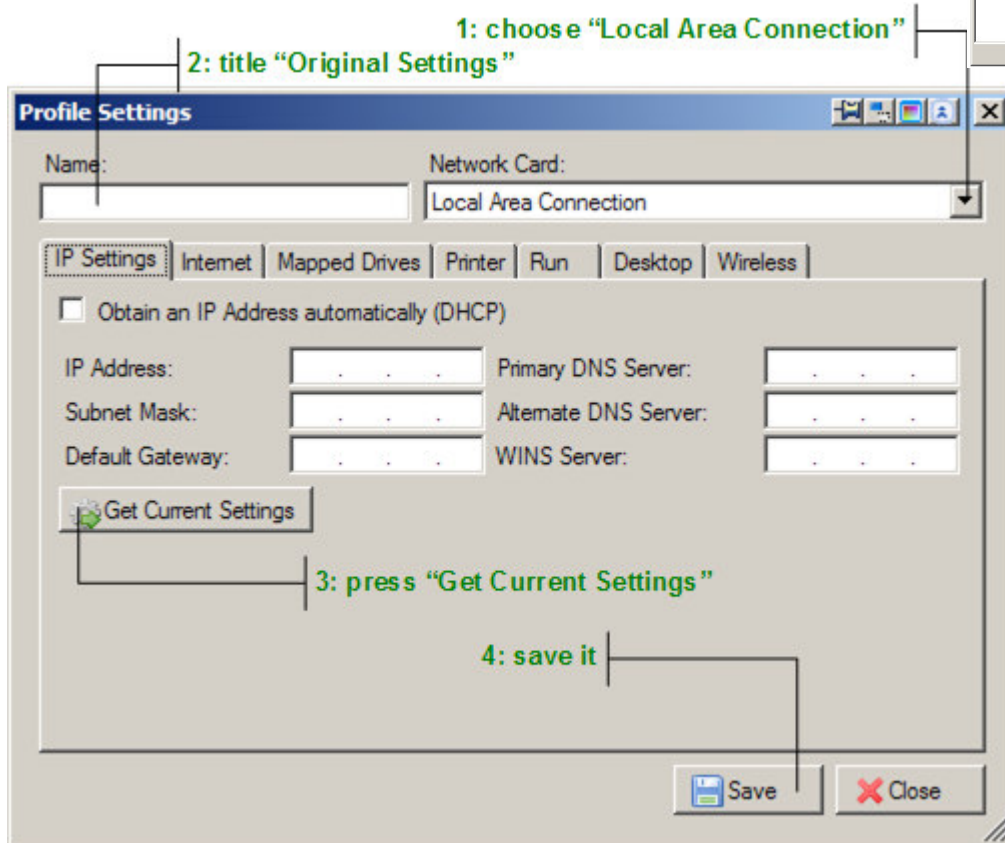
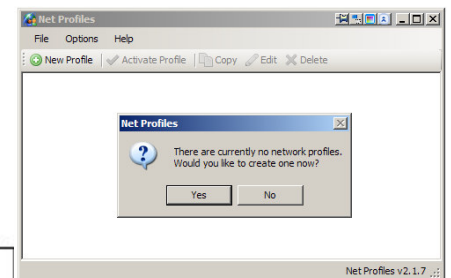
When you have finished setting up MAC unit you can change IP address back to the original so you can use your computer in other pre-configured network environments (for internet or local network).

Please download the app from <http://code.google.com/p/netprofiles/>

Direct link to the current version: http://netprofiles.googlecode.com/files/NetProfilesSetup_2-1-7.exe

After installation, launch Net Profiles and create a new profile.

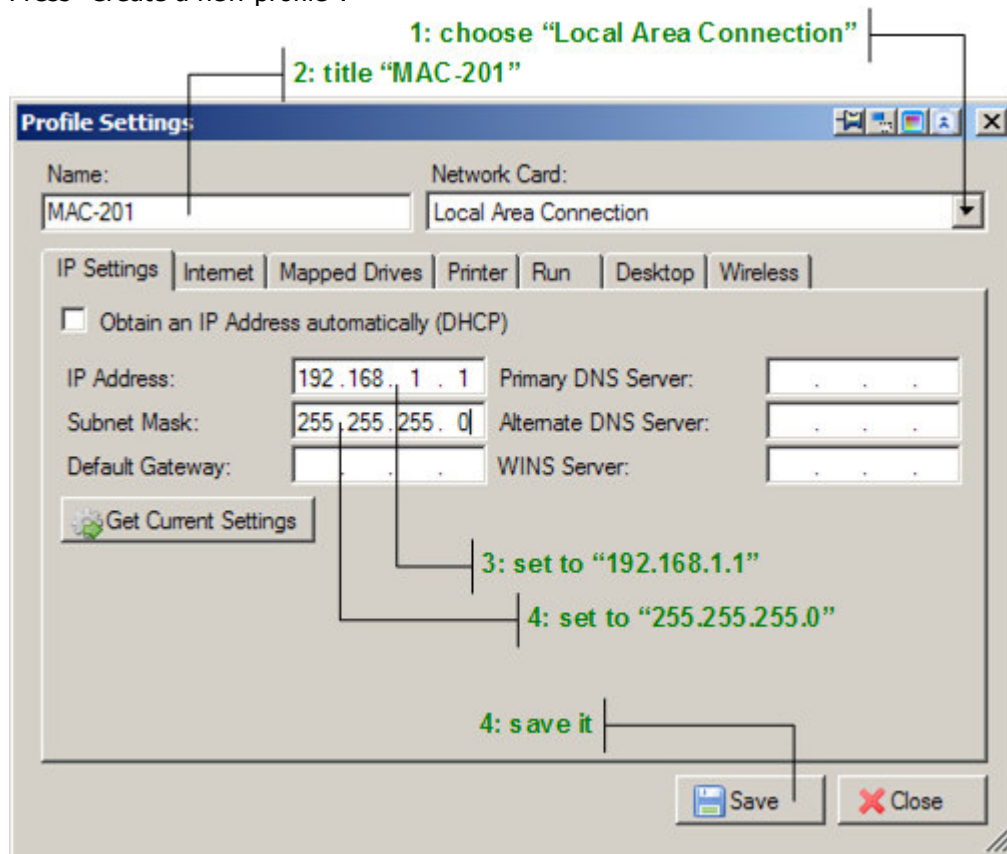
💡 *You may also launch the app from the shortcut on your desktop.*



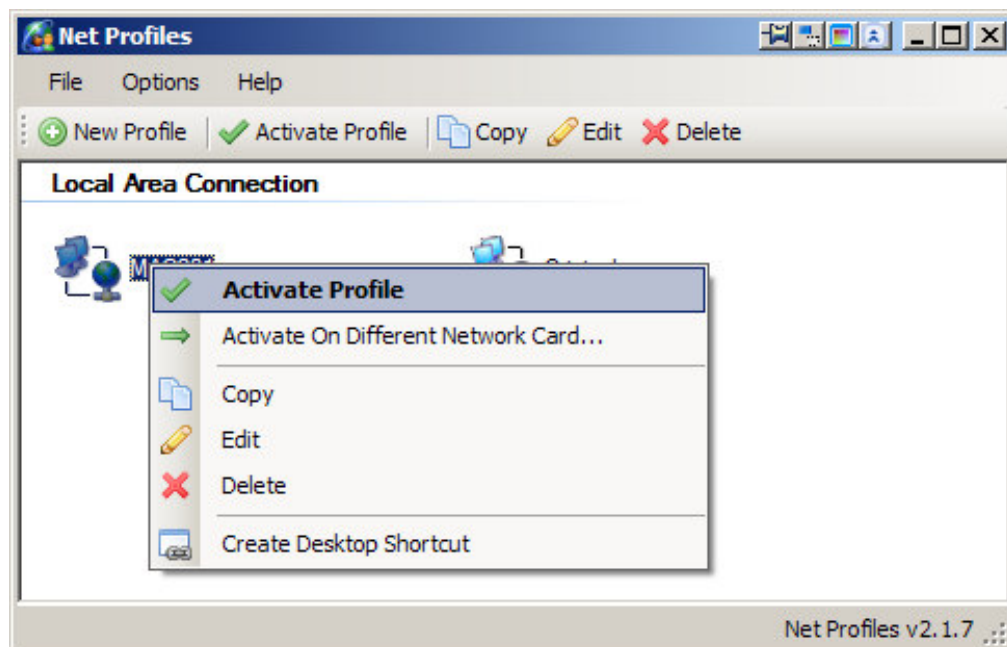
💡 This profile holds your original IP settings you can set back to at any time.

teldis

Let's create another profile with IP address to connect to MAC unit.
Press "Create a new profile":

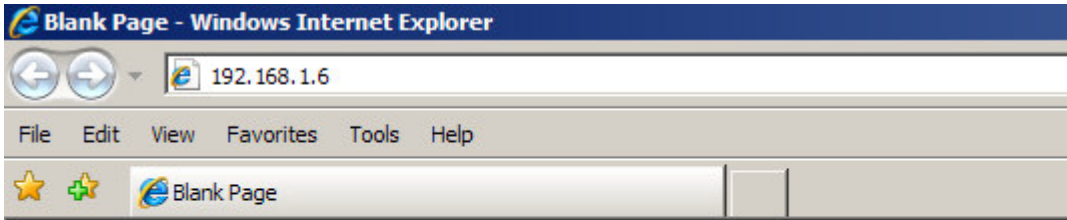


From the main Net Profiles window, right click on MAC-201 profile and choose ACTIVATE PROFILE



You're all set!

Connect your PC to the Ethernet port of the MAC unit.
 Open your favorite web browser i.e. Firefox, Google Chrome or Internet Explorer
 and type in "192.168.1.6" – 💡 this a default IP address for all MAC units.



MAC-201 Class A

(es) (en) (fr)

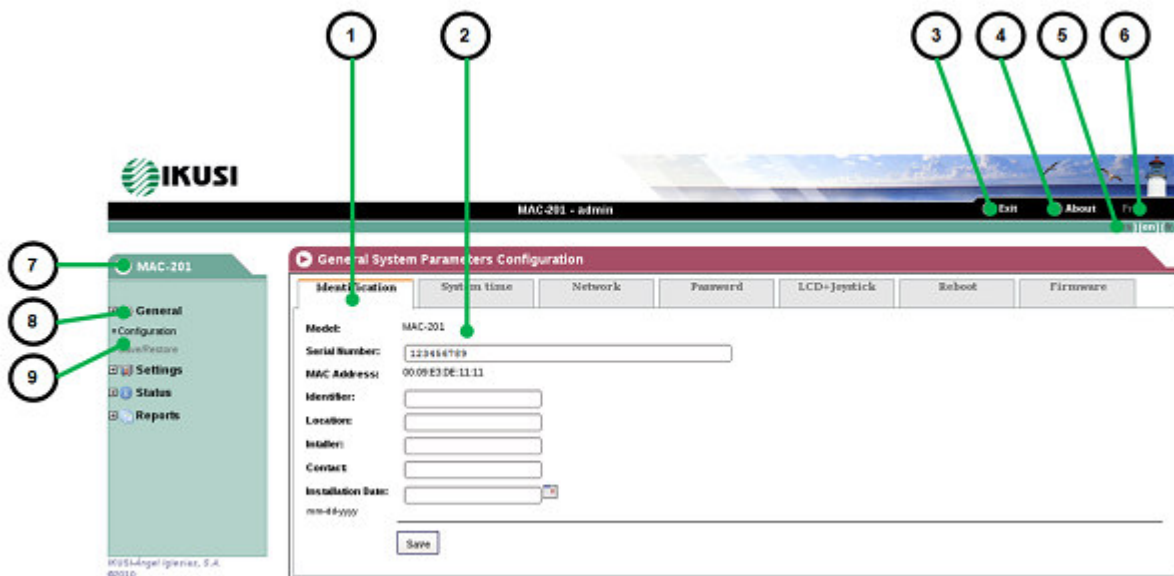
Enter the password and press Accept

User

Password


After few second you should see a welcome screen:
Login: Admin
Password: admin

We think MAC-201 interface is a very user friendly one and there shouldn't be a problem navigating through the menus. *Give it a try!*



💡 Full MAC-201 manual is available for download from our website.

Configuring multiple MAC units to be used in one system.

 All MAC-201 come supplied with the same pre-configured channel settings which may “puzzle” receivers when there is more than one MAC-201 connected to the system. These settings can’t be accessed via the joystick control.

Three easy steps to setting multiple MAC's:

Follow set-up procedure described above to access MAC-201 interface via a web browser.

- Access **The Service Management** tab and modify the LCN & SID values. To change SID values click on notepad icon, change the value and click the icon again to save. The LCN allow you set the required channel numbers & need to be different values on each unit. This also applies to the SID values the defaults are 32/33 & the second unit needs to use 34/35 and so on.
- Access **Advanced Service Management** tab. Default TSID value is 4; next MAC TSID value should be set to 5 and so on. Save settings.
- **Output Setting**, select RF output channel (default is 474MHz CH21); set the second unit to channel 490MHz CH23 for example & save new settings. Rescan receiver after the settings have been changed. Please use *centre frequency* values as table below.

UHF Centre Frequencies

CH	MHz				
21	474	34	578	47	682
22	482	35	586	48	690
23	490	36	594	49	698
24	498	37	602	50	706
25	506	38	610	51	714
26	514	39	618	52	722
27	522	40	626	53	730
28	530	41	634	54	738
29	538	42	642	55	746
30	546	43	650	56	754
31	554	44	658	57	762
32	562	45	666	58	770
33	570	46	674	59	778
				60	786
				61	794
				62	802
				63	810
				64	818
				65	826
				66	834
				67	842
				68	850
				69	858

Please give us a call if you need further assistance. Teldis 01892 511411