



HD**bridge**2000 SERIES

Smarter, High-Density
HD Video Distribution Over Coax

HD**b**2840

ZeeVee's HD**b**2840 encoder/modulator converts HDMI video sources such as signage players into digital cable channels that are **broadcast over existing coax cabling to an unlimited number of HDTVs.**



PLUS a bonus 5th Channel! — You can save a short video loop to the internal memory and use it as an additional signage channel.

IDEAL USES:

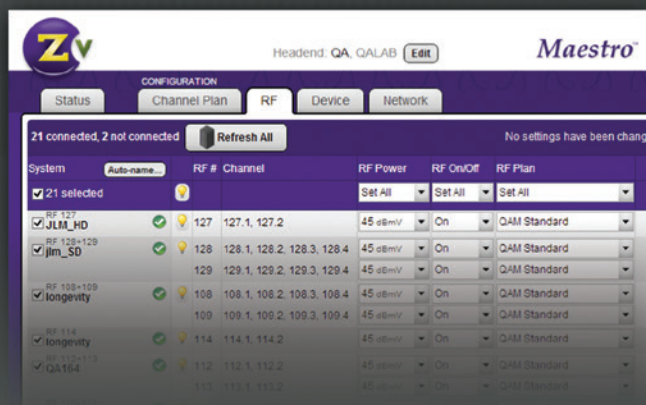
- Distribute HD video throughout your facility
- Replace multiple signage players
- Commercial or residential

Advanced Management:

- Maestro Headend Management Software
- Front-Panel Color LCD
- Local and/or Remote Configuration

Compatibility:

- Use Existing Coax Cabling
- Compatible with any HDTV
- MPEG2 Video and AC3 Audio Encoding
- COFDM Output



| | | |
|-------------------------|--------------------------------|---|
| VIDEO INPUT | HDMI Video | 4 ports per model |
| | Closed Caption | EIA/CEA-608 captions accepted over composite video input (-NA versions only) |
| | Internal Memory | MPEG-2 Program Stream file, up to 400MB |
| AUDIO INPUT | Analog Audio Input | 75 Ohm 0 to 0.7v at Line-level output. Stereo input on industry standard 3.5mm pigtail connector |
| | Digital Audio | Digital as element of HDMI 1.3 port |
| | Encoding | Internally encoded into Dolby® Digital AC-3 or MPEG1 Layer 2 (varies by region) |
| VIDEO ENCODER | Encoder Video Profile | MPEG2 HD Profile 2: ISO13818-2 MP@HL |
| | Traffic Shaping | Variable Bit Rate |
| | Video Transport Bit Rate | 49.76 Mbps |
| | Video Encoding Data Rates | Variable, 10 Mbs - 24 Mbs per channel |
| | Average Encoding Data Rate | 18 Mbs per channel |
| | Encoding Latency | Programmable 100 msec to 400 msec |
| | Color Profile | 4:2:0 |
| | GOP Size | 24 |
| | Video, Audio PID | Programmable |
| | Program Information | Programmable |
| AUDIO ENC. | Audio Encoder | |
| | Encoder Audio Profile | ATSC A/52, Dolby® Digital (AC-3) or Mpeg 2 layer 1 (varies by region) |
| MODULATOR / UPCONVERTER | Modulation Types | QAM 256 (ITU-T J83 Annex B) Interleaving modes: (64,2) only OR DVB-T, DVB-C, QAM 256 (ITU-T J83 Annex A) (varies by region) |
| | Cable Standard | HRC, IRC or STD or User defined (varies by region) |
| | Frequency Range | Frequency Agile from 54 to 864MHz <ul style="list-style-type: none"> • 2 kHz resolution • +/- 30 ppm accuracy • +/- 35 ppm stability |
| | Output Power | +45 dBmV typical |
| | Output Level Adjust | 25 - 45 dBmV in 1dBmV steps |
| | MER | 38 dB typical |
| | I/Q Amplitude Imbalance | < 1% typical |
| Spectral Tilt | <= 1dB over 6MHz typical | |
| CONTROL / SETUP | Network interface | 10/100 mb Ethernet via RJ45 connection IP address via DHCP or set by user HTML/Javascript served web interface for easy configuration Telnet connection for CLI scripting Easy firmware updates All settings saved in NV storage |
| | Front Panel Color Display | Quickly obtain status at a glance |
| GENERAL | Power | 100-240VAC 50/60Hz, 60W max. 30W Typical. IEC 60320-C14 |
| | Cooling | Dual Internal cooling fans, Front Inlet, Rear Exhaust |
| | Enclosure Type | Metal |
| | Enclosure Dimensions | 1.72" H x 17.33" W (without rack mount ears) x 9.9" D 43.6mm H x 440.2mm W x 251.5mm D |
| | System Weight | 6.25lb (2.84 kg) |
| | Carton Dimensions (individual) | 4.25" H 30.875" W 12.125" D 108 mm H 785 mm W 308 mm D |
| | Shipping Weight | 7.88 lbs (3.58 kg) |
| | Temperature/Humidity | Operating +32F to +113F (0C to +45C) / 10% to 80%, non-condensing |
| | Vibration | NSTA 1A in carton |
| | MTBF | 45,000 hours |
| | Compliance | FCC Class A, IEC60065, EN61000 (see manual for specifics), CE, RoHS |
| | Part number | HB2840-NA, HD b2840-EU |
| | Model name | HD b2840 |
| Warranty | 2 years | |

For more details and UK sales information, visit www.teldis.com



ZeeVee, Inc. | Boston | Denver | London | +44 1892 511 411 | sales@teldis.com

©2014 ZeeVee, Inc. All rights reserved. ZeeVee, the ZeeVee logo, and all trademarks are the property of ZeeVee, Inc. All information is subject to change without notice and ZeeVee does not warrant the information's accuracy or correctness. All other trademarks are the property of their respective owners.



www.teldis.com